

An Intimate Portrait of The Anacortes Community Forest Lands Print Collection by Mark Gardner

About the Collection

The first collection of fine-art prints of images made in the Anacortes Community Forest Lands are now available as loose, mounted and matted or framed prints. The prints included in the collection are shown in the following pages. **25% of print sales will be donated to the Friends of the ACFL.**

These images in the Collection have been made over the past three years to create an intimate portrait of the ACFL, and include a diverse set of subjects ranging from the largest, old-growth trees to the smallest fungi and flowers. The titles are the trail number on which the image was captured.

It is my hope that the Collection inspires continued stewardship of this amazing local treasure, provides viewers with a way to experience the forest, and perhaps show aspects of or places in the forest that viewers might not have seen before.

All images started as digital captures which were then finalized in the digital darkroom using traditional darkroom techniques. They are then printed digitally on archival, fine-art paper using pigment inks, the combination of which provides a beautiful print that will last more than a lifetime. Print sizes available for each image are provided in the following pages. Prices are provided on the last page. Prints are also available in custom sizes on fine-art paper, as well as on metal and canvas. For more info, go to photoartbymg.com/acflprints.

About the Artist

Mark Gardner is an award-winning photographer first as a serious amateur since 1991, and a professional since 2006. He combines passion, creativity and technical skill to make artistic images. Mark is based in Anacortes, WA.

For more information, please visit Mark's website, www.photoartbymg.com, or contact Mark at mark@photoartbymg.com or 360-472-0191.

About the ACFL & Friends of the ACFL

Friends of the Forest is a nonprofit organization formed in 1987 to stop the logging of the Anacortes Community Forest Lands with the mission of preserving the ACFL through education, outreach, and stewardship. From the beginning, they've realized the importance of education and connection in inspiring a love for, and dedication towards, the natural world. In that vein, Friends of the Forest provides a variety of educational programming for students at the Anacortes School District as well as to the community at large, all at no cost to the participants.

The Anacortes Community Forest Lands are truly unique in their place among community forests in the United States. Owned and managed by the city of Anacortes, the preservation and education is a joint effort between the city, the Friends of the Forest, and the Skagit Land Trust. In the 1990s, these three entities worked together to raise money toward a conservation easement program that would protect the ACFL in perpetuity. Through this partnership, nearly the entirety of the ACFL's 2800 acres is protected from development and available for recreational use by the public.



Trail 241 #1

Print sizes: 11"x14", 16"x20" and 20"x24"



Trail 115 #1

Print sizes: 11"x14", 16"x20" and 20"x24"



Trail 224 #1

Print sizes: 11"x14", 16"x20" & 20"x24"



Trail 108 #3

Print sizes: 11"x14", 16"x20" & 20"x24"



Trail 210 #1

Print sizes: 11"x14", 16"x20" and 20"x24"

**“Trees are poems that the earth writes upon the sky.”
– Kahlil Gibran**



Trail 108 #1
Print Sizes: 12"x18", 16"x24"
and 20"x30"

Cranberry Lake Road #1
Print Sizes: 12"x18", 16"x24"
and 20"x30"



Trail 123 #1
Print Sizes: 12"x18", 16"x24"
and 20"x30"

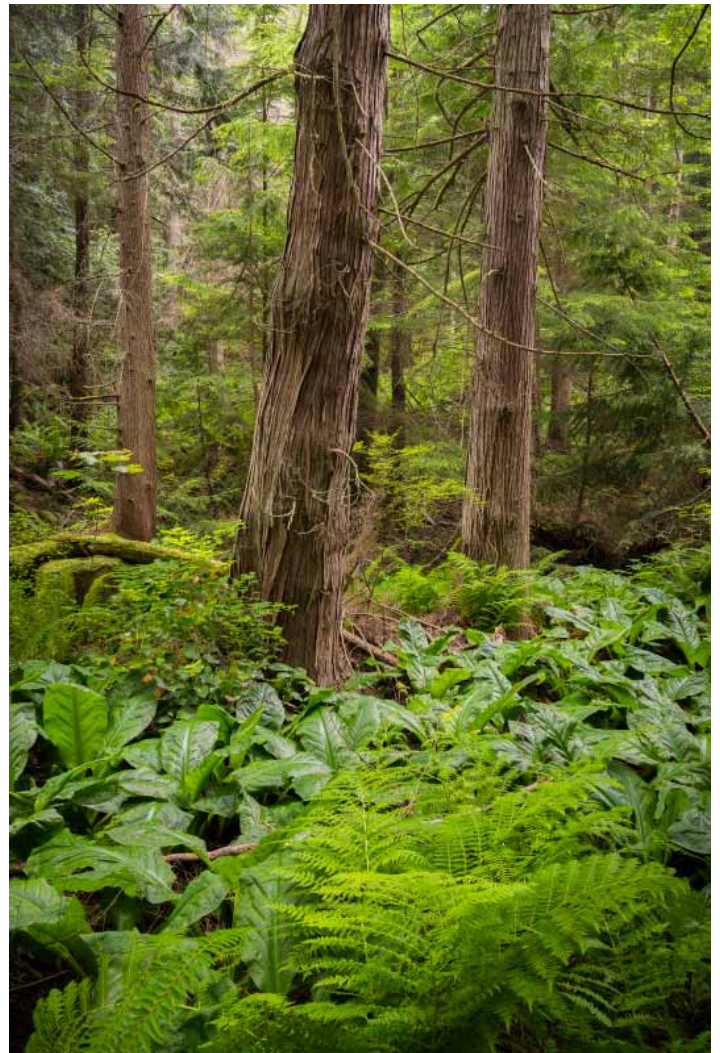
Trail 115 #2

Print Sizes: 12"x18",
16"x24" and 20"x30"



Trail 23 #1

Print sizes: 11"x14", 16"x20"
and 20"x24"



Trail 249 #1

Print sizes: 11"x14", 16"x20"
and 20"x24"

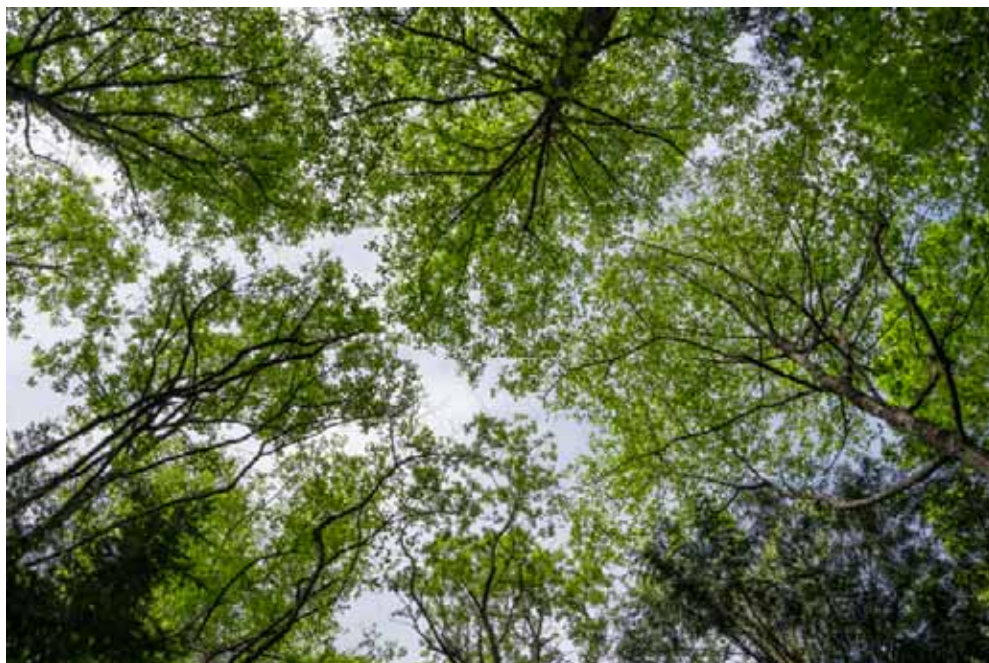


Trail 208 #1

Print Sizes: 12"x18",
16"x24" and 20"x30"

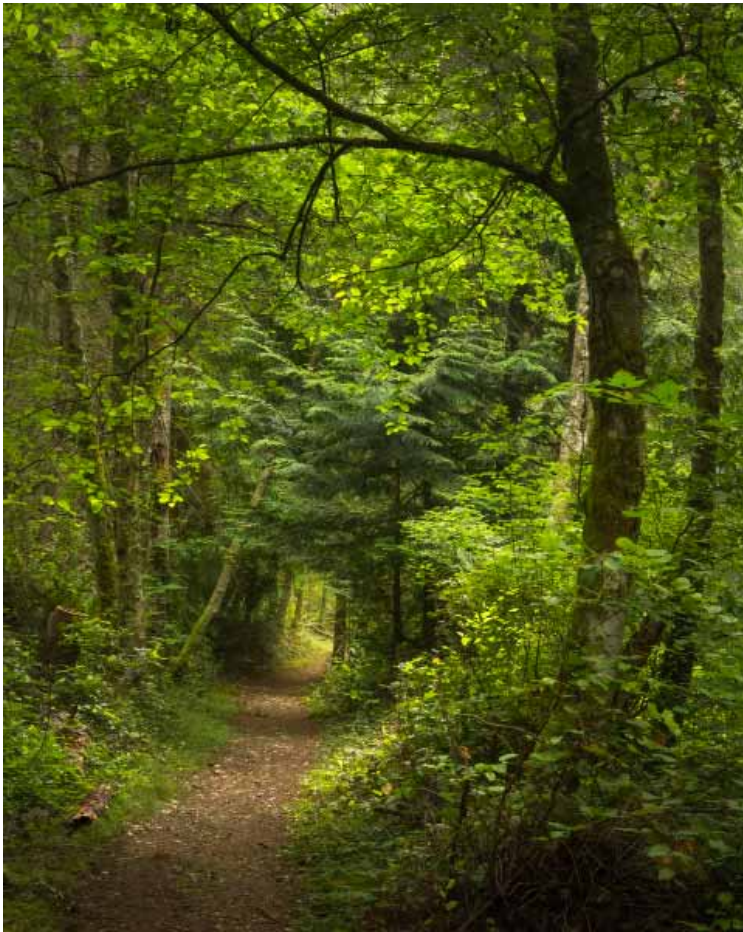
Trail 210 #3

Print sizes: 10"x20"
and 15"x30"



Trail 108 #4

Print Sizes: 12"x18",
16"x24" and 20"x30"



Trail 26 #1

Print sizes: 11"x14", 16"x20"
and 20"x24"



Trail 101 #1

Print Sizes: 12"x18", 16"x24"
and 20"x30"



Trail 304 #1

Print sizes: 11"x14", 16"x20"
and 20"x24"

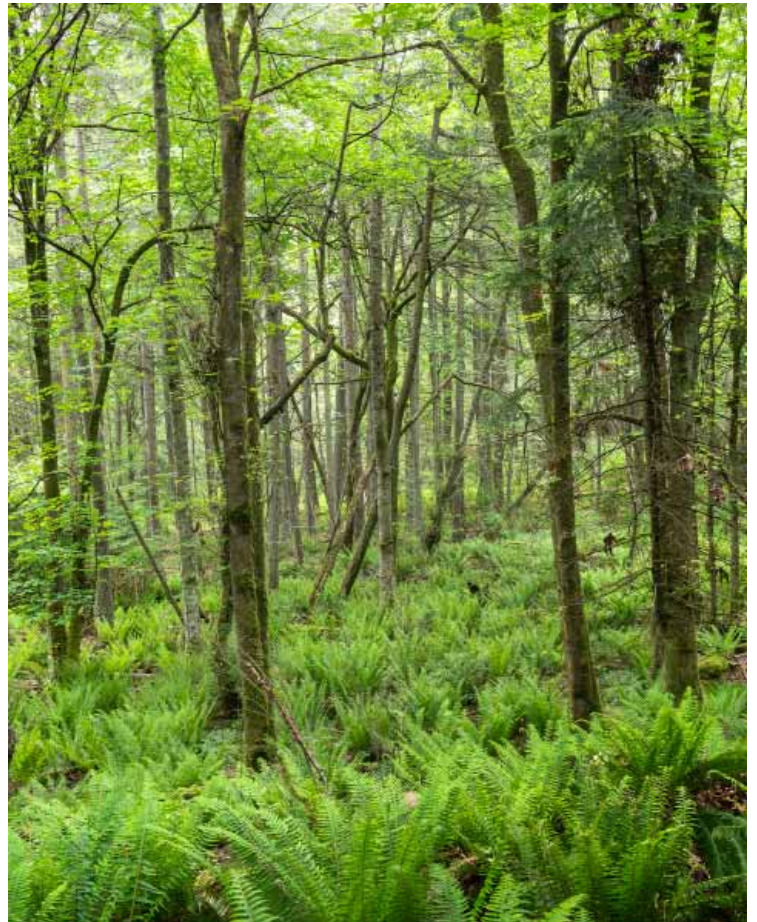
Trail 26 #1

Print sizes: 11"x14", 16"x20"
and 20"x24"



Trail 101 #1

Print Sizes: 12"x18", 16"x24"
and 20"x30"



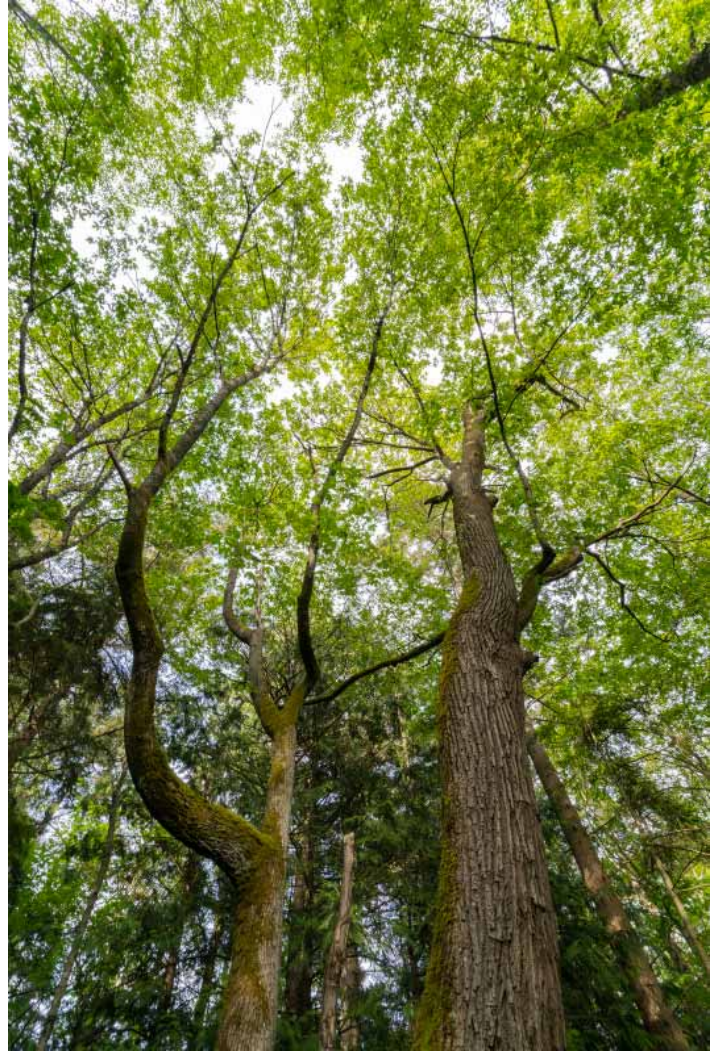
Trail 304 #1

Print sizes: 11"x14", 16"x20"
and 20"x24"



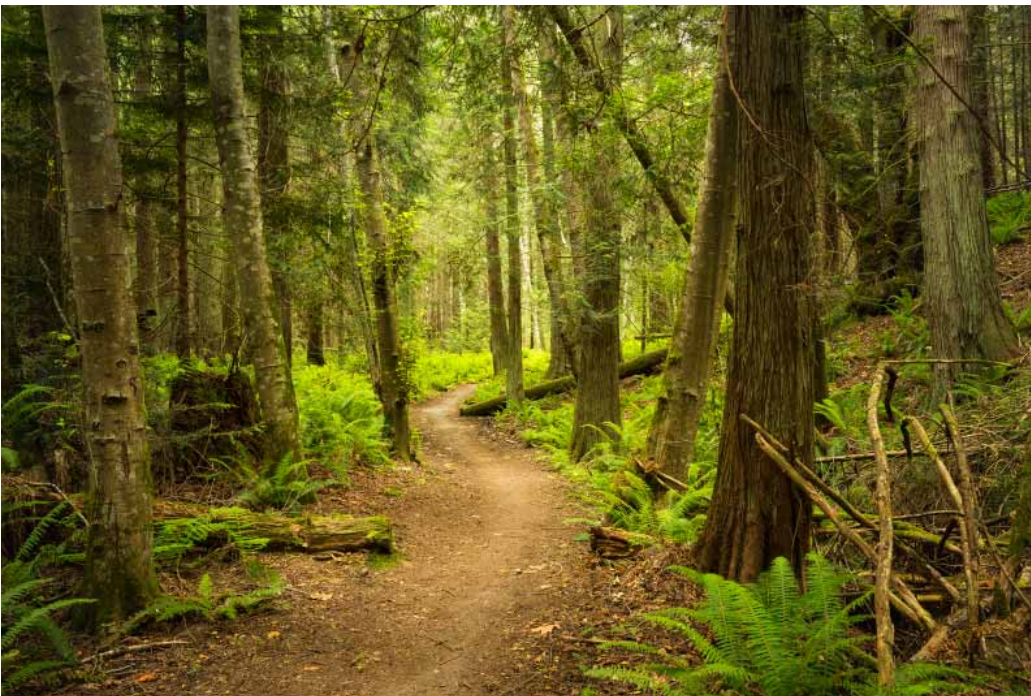
Trail 10 #1

Print Sizes: 12"x18", 16"x24"
and 20"x30"



Trail 108 #5

Print Sizes: 12"x18", 16"x24"
and 20"x30"



Trail 104 #1

Print Sizes: 12"x18",
16"x24" and 20"x30"

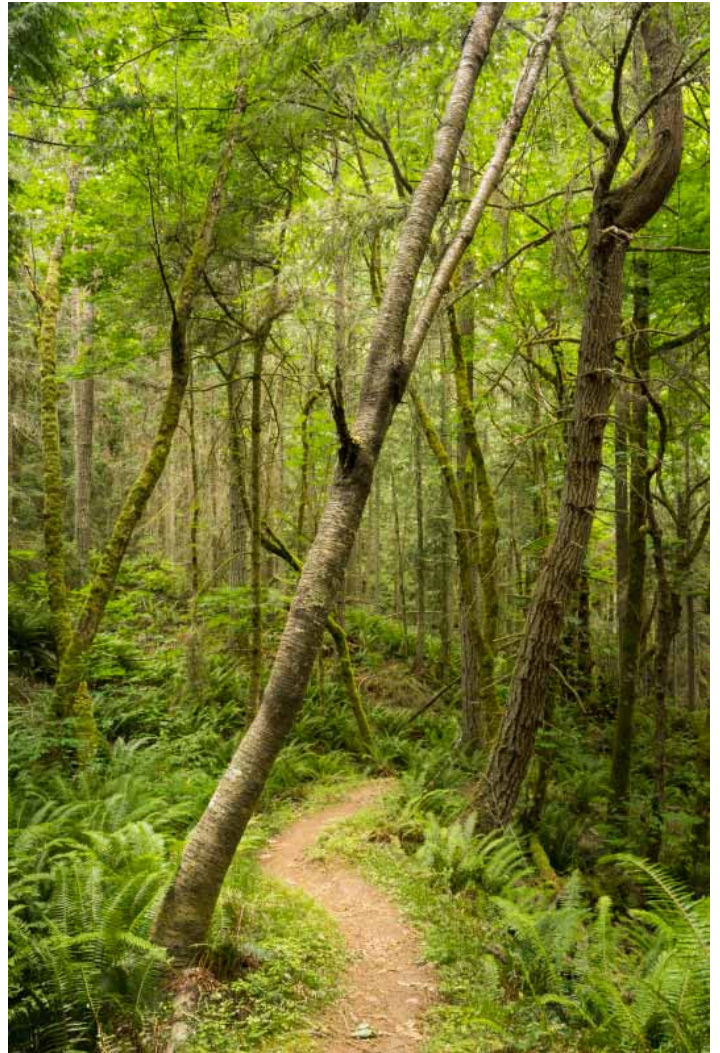
Trail 210 #2

Print Sizes: 12"x18",
16"x24" and 20"x30"



Mt Erie Road #1

Print Sizes: 12"x18", 16"x24"
and 20"x30"



Trail 317 #1

Print Sizes: 12"x18", 16"x24"
and 20"x30"



Trail 108 #2

Print sizes: 11"x14", 16"x20" and 20"x24"



Trail 210 #4

Print Sizes: 12"x18", 16"x24" and 20"x30"

AFCL Print Collection Prices

Print Only		Framed Prints	
Print Size	Price	Frame Size	Price
Panoramic Prints			
10x20	\$245	18x28	\$495
15x30	\$345	22x36	\$645
Prints with a 4x5 aspect ratio			
11x14	\$195	16x20	\$445
16x20	\$315	24x28	\$615
20x24	\$395	28x34	\$695
Prints with a 2x3 aspect ratio			
12x18	\$225	18x24	\$475
14x20	\$295	22x28	\$595
16x24	\$345	24x30	\$645

Ordering Information

Please contact Mark at 360-472-0191 for information on ordering. We'll work closely with you to ensure you get the right size for your space. Thanks!

Notes:

1. Prices are for prints on fine-art paper. Canvas and metal prints are also available.
2. 25% of print sales will be donated to the Friends of the AFCL
3. If required, shipping costs and taxes will be added to the sale price.
4. Frame dimensions are measured on the inside of the frame.
5. Print prices and specifications are subject to change without notice.
6. Questions? Email mark@photoartbymg.com or call 360-472-0191